

BUDGET RESOLUTION 2020-116

A RESOLUTION AMENDING THE FISCAL YEAR 2020 BUDGET TO APPROPRIATE FUNDS FROM THE RESERVE FOR BUILDING FUND FOR BUILDING RELATED EXPENSES IN THE AMOUNT OF \$160,000

WHEREAS, staff is requesting to use reserve funds to purchase new modular security walls, doors and surfaces from OEC Business Interiors for the Growth Management Department on the second floor of the Citizen Service Center (CSC) building;

WHEREAS, the new layout and product will provide more security for the staff and public and the new layout is consistent with changes made to City Hall and the first floor of the CSC building;

WHEREAS, using modular walls provides flexibility to make changes within a department when needed;

WHEREAS, the City's Building Fund has a reserve balance of approximately \$2,654,240 and this expense is an appropriate use of the funding.

NOW, THEREFORE BE IT RESOLVED, BY THE CITY COUNCIL OF THE CITY OF OCALA, FLORIDA, duly assembled in regular session, that the FY2020 Budget be amended as outlined below to appropriate funding as follows:

Source:

001-099-999-513-81-99170 Building's Reserve for Fund Balance (\$160,000)

Use:

001-016-061-524-52-52060 Building's Machinery & Equipment (\$1,000-\$4,999) \$160,000

This resolution adopted this 5 day of November, 2019.

CITY OF OCALA

By: Jay A. Musteli
~~Mary S. Rich~~ Jay A. Musteli
President, Ocala City Council *Pro Tem*

ATTEST:

By: Angel B. Jacobs
Angel B. Jacobs
City Clerk

Approved as to form and legality:

By: Patrick G. Gilligan
Patrick G. Gilligan
City Attorney

Reviewed for accounting accuracy & completeness:

By:  _____
John Zobler
City Manager

PRIVACY WALL PROJECT NOTES:

1. ALL FLOOR, CEILINGS AND ADJACENT WALLS MUST BE FINISHED PRIOR TO COMMENCEMENT OF INSTALLATION. DELAYS IN SITE READINESS MAY RESULT IN WAREHOUSING OR OTHER ACTIVITIES THAT COULD RESULT IN AN INCREASE IN PRICE.
2. IF THE USE OF A FREIGHT ELEVATOR IS NOT PROVIDED ADDITIONAL LABOR EXPENSES WILL BE INCURRED. IN UNUSUAL FIELD CONDITIONS SHOULD WE HAVE TO RENT OR PURCHASE ADDITIONAL HOISTING EQUIPMENT ADDITIONAL EXPENSES WILL BE INCURRED.
3. RELOCATION OF CEILING COMPONENTS SUCH AS, BUT NOT LIMITED TO, SUPPLY/RETURN DIFFUSERS, LIGHT FIXTURES, SPRINKLER HEADS, SPEAKERS, AND LIFE SAFETY DEVICES ARE THE RESPONSIBILITY OF THE CUSTOMER.
4. PREOCCUPANCY WASH DOWN OF PANELS AND GLASS IS NOT INCLUDED. PROJECT WILL BE LEFT BROOM CLEAN. PACKAGING AND SCRAPE WILL BE REMOVED FROM SITE.
5. ALL DIMENSIONS ARE CENTER TO CENTER UNLESS OTHERWISE NOTED.
6. OBTAINING THE REQUIRED BUILDING PERMITS ARE THE RESPONSIBILITY OF THE CUSTOMER.

CONTROLLED RECEPTACLES FOR MODULAR FURNITURE:

PLUG LOAD CONTROL IS REQUIRED BY FBC ENERGY CONSERVATION C405.7.1 AND ASHRAE STANDARD 90.1.

LINE 3 (CIRCUIT 3) WILL BE DESIGNATED AS THE CONTROLLED RECEPTACLE UNLESS OTHERWISE DIRECTED.

COORDINATE WITH PROJECT ENGINEER/ELECTRICIAN FOR WIRING SCHEMATIC.

RECEPTACLES NOTED 3 ON THE DRAWING ARE CONTROLLED.

INSTALLED RECEPTACLES WILL BE LABELED CONTROLLED.

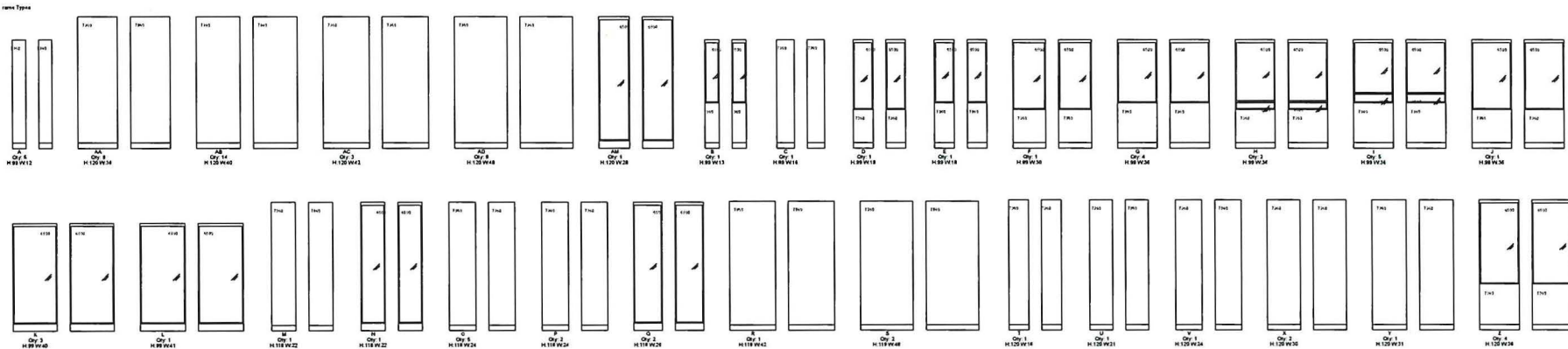
PRIVACY WALL LIGHT SWITCHES:

ENCLOSED AREA'S ARE REQUIRED BY FBC C405.2.1.1 TO HAVE AT LEAST ONE MANUAL CONTROL FOR THE LIGHTING SERVING THE AREA.

OEC TO PROVIDE ROCKER SWITCH WITH RED END COLOR AND ON/OFF IMPRINTING, TRANSFORMER AND 18 GAUGE WIRE.

CUSTOMER IS RESPONSIBLE FOR COORDINATING WITH ELECTRICIAN TO WIRE SWITCH.

Linear Footage Legend	
Privacy Wall Solid Hollow Core Panel	166'8"
Privacy Wall Solid End Core Panel	0'
Privacy Wall Glass Panel	21'10"
Privacy Wall Clerestory Panel	547"
Privacy Wall Swing Door	23'4"
Privacy Wall Slider Door	28'0"
Privacy Wall and GS Junctions and Mini-Ends	11'10.66"
Total Linear Footage	306'3.66"
Total Privacy Wall/Glass Selections	149



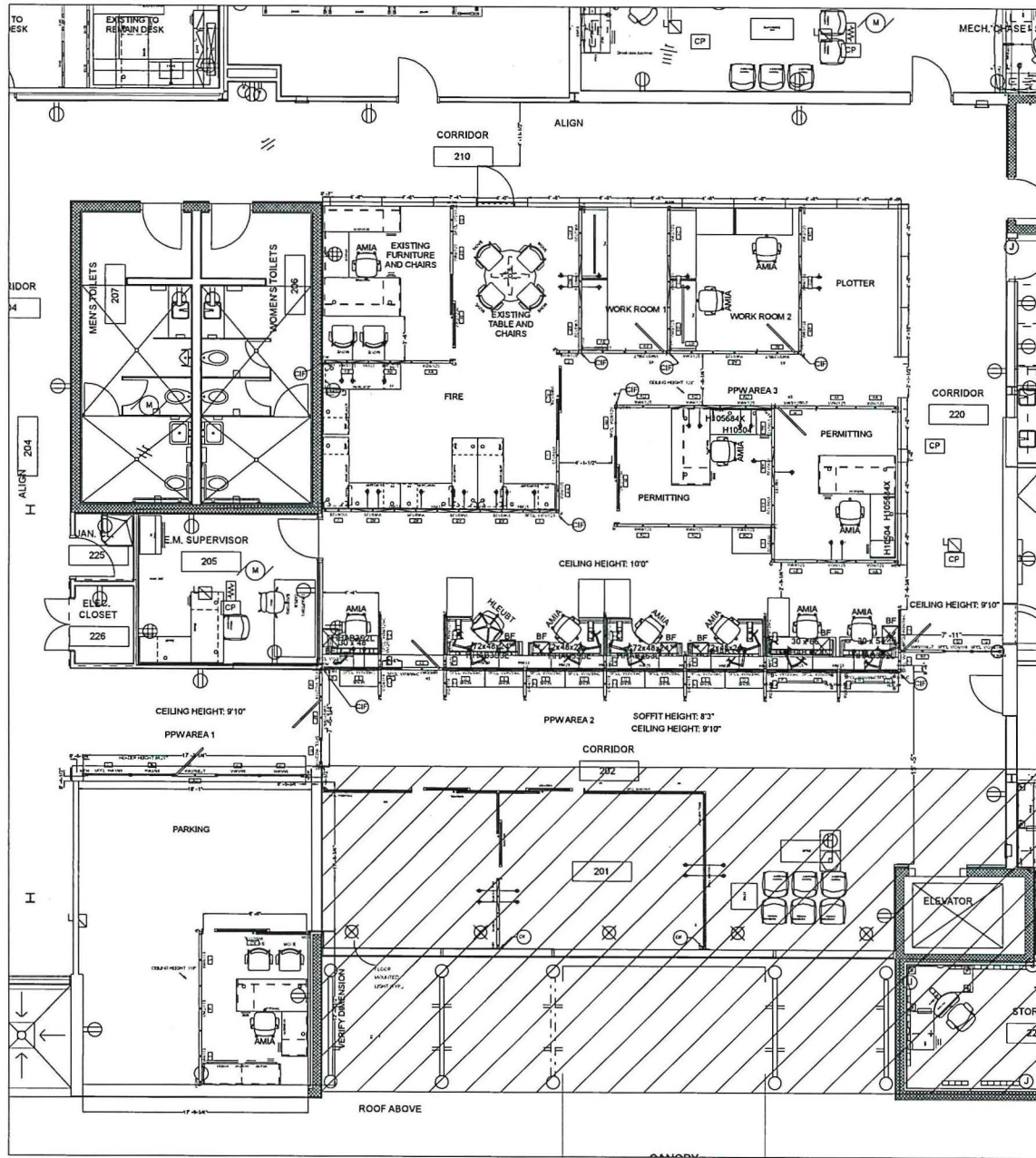
Revision	Date	Description

No. _____
 Date _____
 Description _____

OEC Business Interiors
 1601 N.W. 25th Blvd., Gainesville, FL 32609
 P: 352.233.1000
 F: 352.233.1002
 www.oecinteriors.com
 18250000657

Reason for any change, design, revision, or deletion, other than
 revision, this drawing was prepared based on information that was
 provided to OEC Business Interiors. OEC Business Interiors
 will not be responsible for any errors or omissions in this drawing
 and its specifications. This drawing is property of OEC Business Interiors, created for the sole
 use of the client. OEC Business Interiors shall not be held
 liable for errors or omissions in this drawing or its specifications.

Project No. _____
 Contract _____
 Scale: 1/4" = 1'-0"
 Revision: _____
 Drawn By: _____
 Checked By: _____
 Date: _____
 Project Manager: _____



REVISION	
1	REVISED PER COMMENTS FROM THE ARCHITECT
2	REVISED PER COMMENTS FROM THE ARCHITECT
3	REVISED PER COMMENTS FROM THE ARCHITECT
4	REVISED PER COMMENTS FROM THE ARCHITECT
5	REVISED PER COMMENTS FROM THE ARCHITECT
6	REVISED PER COMMENTS FROM THE ARCHITECT
7	REVISED PER COMMENTS FROM THE ARCHITECT
8	REVISED PER COMMENTS FROM THE ARCHITECT
9	REVISED PER COMMENTS FROM THE ARCHITECT
10	REVISED PER COMMENTS FROM THE ARCHITECT

Review this drawing carefully. Design services are billable after one revision. This drawing was prepared based on information that was provided by the client. It is the responsibility of that end user to verify the content and accuracy of this drawing and its specifications. This drawing is property of OEC Business Interiors. It is not to be used for any other project without the written consent of OEC Business Interiors. It is not to be reproduced to depict bids or specifications for any other projects or manufacturers.

Signature/Date _____

**2ND FLOOR
SECURITY WALL**

City of Ocala

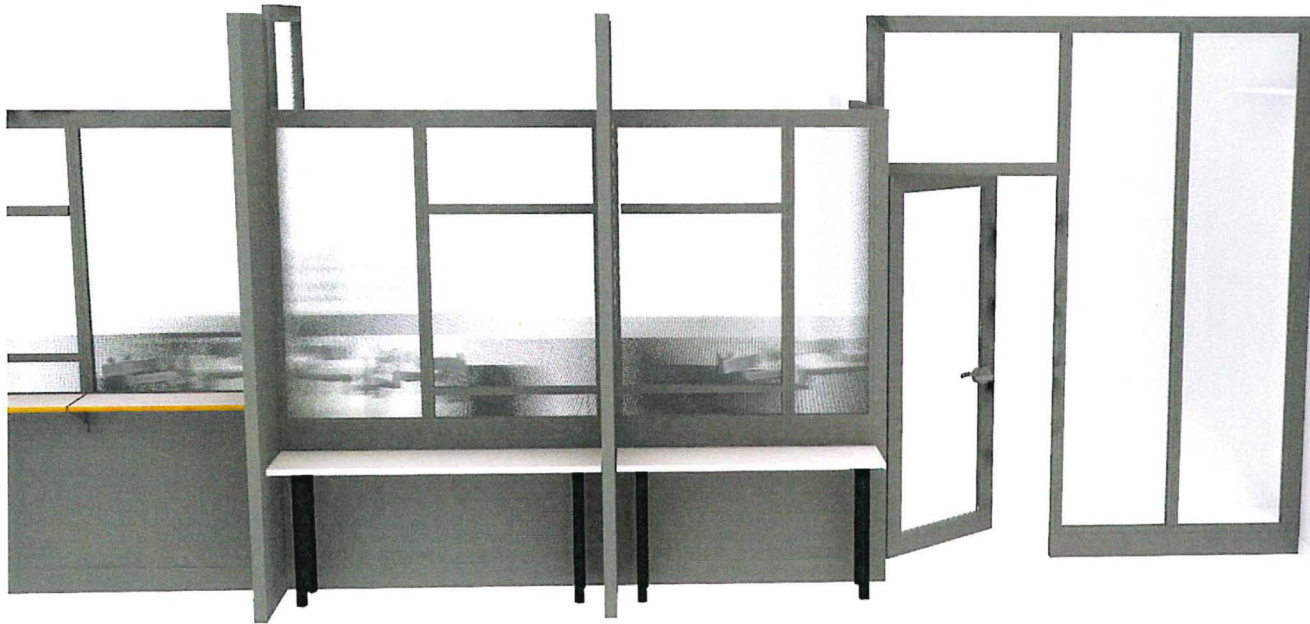

OEC Business Interiors
The Art of Professionalism
 1001 NW 80th Blvd. Gainesville, FL 32609
 P. 352.332.1192 F. 352.333.6602
 www.oec-fi.com
 IB260000967

KEY PLAN

DRAWN BY	BH	APPROVED BY	BHW
SCALE:	1/4" = 1'-0"		
DATE:	7.31.19		
PROJECT NO:	1299		

F1

P:\Drawings\City of Ocala\2nd Floor\1299.mxd



[Ship to, Last name]

CITY OF OCALA

Project No.: [Order entry, Contract]
 Scale: 1/4"=1'-0"
 Print date: TEXT
 Drawn by: TEXT
 Account Manager: TEXT

Review this drawing carefully; design services are billable after one revision. This drawing was prepared based on information that was provided by the end user. It is the responsibility of that end user to verify the content and accuracy of this drawing and it's specification. This drawing is property of OEC Business Interiors, created for the sole use of OEC Business Interiors, and shall not be reproduced to solicit bids or quotes from any other dealers or manufacturers.

Signature/Date

 **OEC Business Interiors**
 The Workplace Professionals
 1601 NW 80th Blvd Gainesville, FL 32606
 P:352.332.1192 F:352.333.8002
 www.oec-fl.com
 IB260000967

Revision		
No.	Date	Description
-	-	-
-	-	-
-	-	-
-	-	-
-	-	-



[Ship to, Last name]

CITY OF OCALA

Project No.: [Order entry, Contract]
 Scale: 1/4"=1'-0"
 Print date: TEXT
 Drawn by: TEXT
 Account Manager: TEXT

Review this drawing carefully; design services are billable after one revision. This drawing was prepared based on information that was provided by the end user. It is the responsibility of that end user to verify the content and accuracy of this drawing and its specification. This drawing is property of OEC Business Interiors, created for the sole use of OEC Business Interiors, and shall not be reproduced to solicit bids or quotes from any other dealers or manufacturers.

Signature/Date



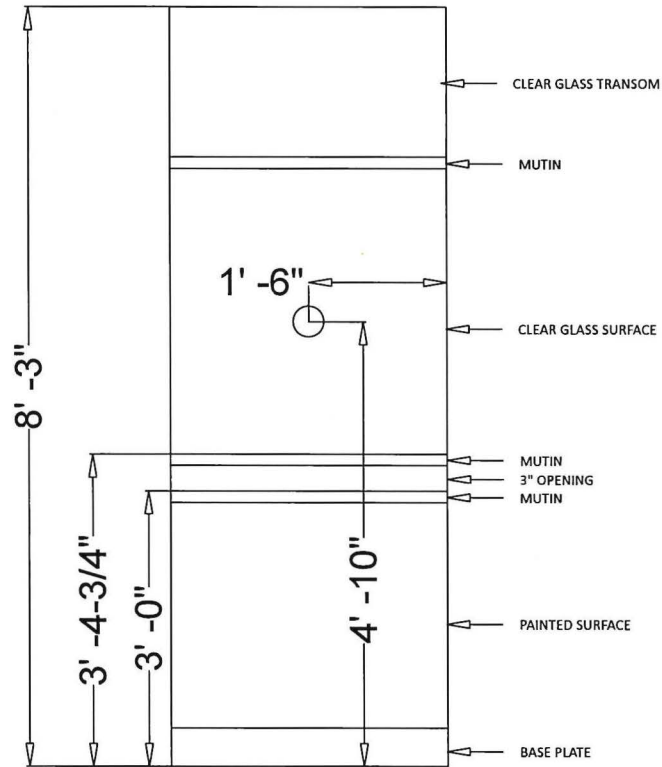
OEC Business Interiors
 The Workplace Professionals

1601 NW 80th Blvd Gainesville, FL 32606
 P:352.332.1192 F:352.333.6002
 www.oec-fl.com

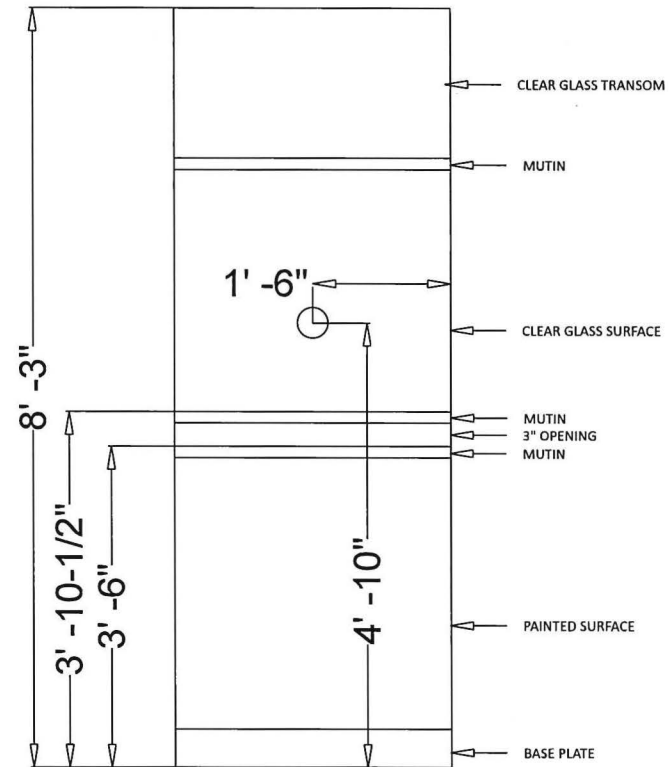
IB260000967

Revision		
No.	Date	Description
-	-	-
-	-	-
-	-	-
-	-	-
-	-	-

36"w



36"w



Scale: 1/2" = 1'

CITY OF OCALA

Project No.: [Order entry.
Contract

Scale: 1/4"=1'-0"
Print date: TEXT
Drawn by: TEXT
Account Manager: TEXT

Review this drawing carefully. design services are billable after one revision. This drawing was prepared based on information that was provided by the end user. It is the responsibility of that end user to verify the content and accuracy of this drawing and it's specification. This drawing is property of OEC Business Interiors, created for the sole use of OEC Business Interiors, and shall not be reproduced to solicit bids or quotes from any other dealers or manufacturers.

Signature/Date



OEC Business Interiors
The Workplace Professionals
1601 NW 80th Blvd Gainesville, FL 32606
P:352.332.1192 F:352.333.8002
www.oec-fl.com
IB260000967

Revision		
No.	Date	Description
-	-	-
-	-	-
-	-	-
-	-	-
-	-	-