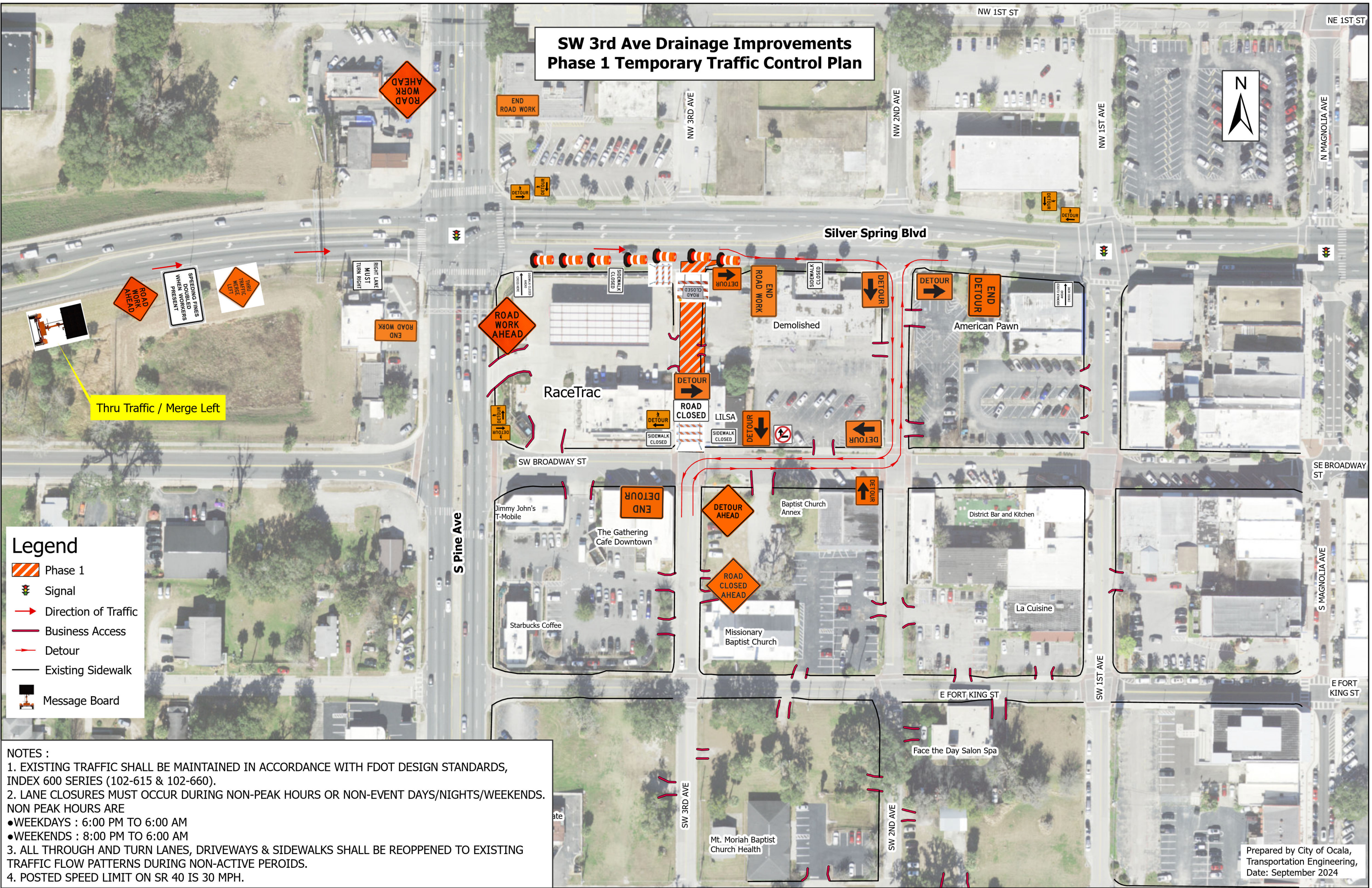


SW 3rd Ave Drainage Improvements Phase 1 Temporary Traffic Control Plan



Legend

-  Phase 1
-  Signal
-  Direction of Traffic
-  Business Access
-  Detour
-  Existing Sidewalk
-  Message Board

NOTES :

1. EXISTING TRAFFIC SHALL BE MAINTAINED IN ACCORDANCE WITH FDOT DESIGN STANDARDS, INDEX 600 SERIES (102-615 & 102-660).
2. LANE CLOSURES MUST OCCUR DURING NON-PEAK HOURS OR NON-EVENT DAYS/NIGHTS/WEEKENDS. NON PEAK HOURS ARE
 - WEEKDAYS : 6:00 PM TO 6:00 AM
 - WEEKENDS : 8:00 PM TO 6:00 AM
3. ALL THROUGH AND TURN LANES, DRIVEWAYS & SIDEWALKS SHALL BE REOPENED TO EXISTING TRAFFIC FLOW PATTERNS DURING NON-ACTIVE PERIODS.
4. POSTED SPEED LIMIT ON SR 40 IS 30 MPH.